



WASHBURN MILLERS

ADVANCED ACADEMICS AND DUAL CREDIT

Agenda – Advanced Academics

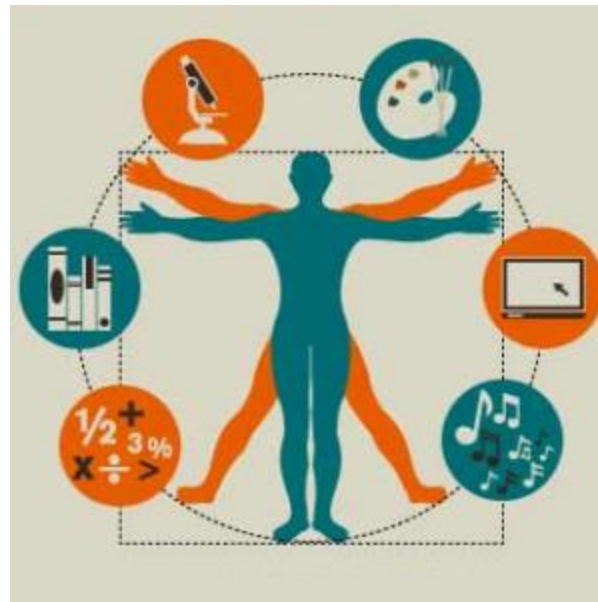


- Introductions
- Factors to consider
- Advanced Academics
 - at Washburn
 - at Local colleges
- Questions

People to Know

- Counselors
 - ▣ Loretta Collins (A-C)
 - ▣ Herb Crowell (D-Hug)
 - ▣ Amy Webster (Huh-Mod)
 - ▣ John Pemberton (Moe-Sam)
 - ▣ Teresa Savage (San-Z)
- Advanced Academics and IB Coordinator
 - ▣ Aaron Percy

Student-Centered Decisions



Factors to consider

- Graduation requirements
- College and Career plans
- Course load rigor (academic challenge)
- Learning environment
- Student interest
- Life balance



Advanced Academics

Washburn

- Advanced Placement (AP)
- International Baccalaureate (IB)
- MCTC Math partnership
- Project Lead The Way (PLTW)
- World Language Proficiency Certification

Local colleges

- Post Secondary Enrollment Options (PSEO)
 - Grade 10 – Career & Tech Ed courses
 - Grade 11 & 12 – part time or full time student

Why Advanced Academics?



- Preparation for college
- Recognition by college admissions
- Potential credit articulation
 - Potential savings on tuition
 - Depends on receiving institution
 - Question to ask: “Does the credit count toward graduation or used for placement in higher level classes?”



PSEO



The Minnesota Legislature created Post-Secondary Enrollment Options (PSEO) programs in 1985 to promote rigorous course taking and improve student transitions to postsecondary education.

PSEO allows high school juniors, seniors and some sophomores to take college courses.

Why PSEO?

- Students who participate in PSEO prefer the learning environment of being on a college campus. They may be receiving credit for high school requirements/classes and also credit for their college level courses.
 - ▣ Example: Taking a 4 credit English course at the University of Minnesota which transfers as 1 credit of English for Washburn
 - ▣ Can take classes that count for core or elective courses
 - ▣ Wider variety of courses than typically found in high school

Considerations for PSEO

High School	PSEO
You are learning with your peers	You are learning with adults
Your classes are within your high school building. You know how to get there.	Your classes will be in different locations on a college campus. You need to figure out logistics of how to get there and back home.
Teachers approach you if they believe you need assistance	Professors typically expect you to initiate contact if you need assistance and only have specific office hours to meet with you.
Testing is frequent and covers small amounts of material	Testing is often infrequent and cumulative, covering large amounts of material

MARGIE'S SCHEDULE (P/T U of M and P/T WHS): Fall Semester 2017

	MONDAY	TUESDAY	WEDNESDAY	THURSDAY	FRIDAY
8:00	CALCULUS 1271: University of Minnesota 8:00-8:50				
9:00		POLITICAL SCIENCE: U of M 9:45-11:00		POLITICAL SCIENCE: U of M 9:45-11:00	
10:00					
11:00					
12:00	WIND ENSEMBLE: WHS 4th Hour				
1:00	IB SL PHYSICS: WHS 5th Hour				
2:00	IB HL LANGUAGE and LITERATURE: WHS 6th Hour				
3:00					
4:00					

NOELLE'S SCHEDULE (Full Time MCTC): Fall Semester 2017

	MONDAY	TUESDAY	WEDNESDAY	THURSDAY	FRIDAY
8:00					
9:00					
10:00		THE PHYSICAL ENVIRONMENT MCTC 9:45-11:00			HATHA YOGA MCTC 10:00-11:00
11:00	PHYSICAL GEOLOGY: MCTC 11:15-12:30		PHYSICAL GEOLOGY MCTC 11:15-12:30		
12:00					
1:00	CALCULUS: MCTC 12:45-1:50				
2:00	CALCULUS: MCTC 12:45-1:50				
3:00					
4:00					
5:00					
6:00			GEOLOGY LAB MCTC 6:00-7:40		
7:00					
8:00					

Typical comments made by PSEO students

- “I don’t have “busy” work”.
- “I am treated like an adult”.
- “It’s nice to not be in class for 7 straight hours”.
- “You better make sure you go to class and stay up on the reading”.
- “Tests and papers mean everything”.
- “You need to get your transportation figured out.”
- “No one cares if you pass or fail. It is all up to you”.
- “I feel a little disconnected to my high school life and friends”.

Local PSEO Programs

(appx 90 WHS students currently participating)



University of Minnesota

Minneapolis College (MCTC)

Normandale Community College

North Central University

Concordia

St. Kates'

Hamline

Macalester

Bethel

St. Paul College

Northwestern College

MCAD

Dunwoody



- Application deadline: April 15th (One enrollment period for year)
- Criteria for admittance: GPA, course rigor
- **Typical** enrollee: 3.93 GPA
- Basic form must be completed on-line but additional paperwork must be picked up in counseling office and turned in to the U of M
- Placement testing for Math and World Language after admission
- Science classes usually have a high school prerequisite

Minneapolis College (MCTC)



- June 1st / December 1st deadlines
- Juniors: 3.0 GPA **OR** score in 70th percentile on the PSAT, SAT, or ACT **AND** pass the Accuplacer test at MCTC.
- Seniors: 2.5 GPA **OR** score in 70th percentile on the PSAT, SAT, or ACT **AND** pass the Accuplacer test at MCTC.



- Application deadline: July 1st and Dec. 1st
- Juniors: 3.5 GPA **OR** score in 70th percentile on the PSAT, SAT, or ACT **AND** pass the Accuplacer test at Normandale.
- Seniors: 3.0 GPA **OR** score in 70th percentile on the PSAT, SAT, or ACT **AND** pass the Accuplacer test at Normandale.



PSEO Application Steps

19

1. Apply on your own through the colleges website. Counseling office has “How To Apply” tip sheets if interested.
2. Take the Accuplacer if applying to Minneapolis College.
3. After completing the application, make an appointment with your counselor to get transcript and other materials. You are still free to visit with us prior to doing your application.
4. Submit all required materials your counselor has given you.
5. After notification of acceptance, attend orientation;
6. Meet with WHS counselor to approve credits and set-up schedule (early August)

Panel Discussion/ Q and A

- Tuesday, January 14th from 2:00-3:00pm
- Fill out sign-up sheet
- Will receive a pass to attend the discussion. Make sure you are in class. Must have the pass with you to attend.

Advanced Placement Courses



Advanced Placement (AP)



- AP courses are college level classes that students take at Washburn
- More academically challenging than regular classes
- Great preparation for future advanced courses at Washburn
- Potential college credit
- Classes offered at Washburn:
 - AP English Literature and Comp (10th grade)
 - AP US History (10th grade)
 - AP Human Geography (9th grade)
 - AP Chemistry (10th-12th)
 - AP Statistics (10th and 12th)
 - AP Physics (Exam Prep through IB SL Physics)
- Testing in May (score range: 1-5)

International Baccalaureate (IB)



What is IB?

- The International Baccalaureate (IB) Program focuses on teaching students to think critically and independently, and how to inquire with care and logic.
- IB prepares students to succeed in a world where facts and fiction merge in the news, and where asking the right questions is a crucial skill that will allow them to flourish long after they've graduated from the program. IB curriculum is used in almost 5,000 schools globally and in over 150 countries around the world.



Who is an IB Student?

- Anyone and everyone should be a part of our growing IB program.
- The IB program at Washburn High School is primarily tailored for students at the 11th and 12th grade levels.
- We want our IB program to be the most diverse, dynamic, and culturally aware program in the United States.

What are expectations of an IB Student?

- The expectations for IB students are high.
- Everyone that enters an IB course should be willing to exert their best effort. At Washburn, we want to encourage all students to challenge themselves, rather than take the path of least resistance. Take a risk!

Visit the IB Website!

- For all the information you need go to the Washburn IB website located under Advanced Academics on the Washburn webpage!
- If you are interested in pursuing the Full IB Diploma, fill out the “Full Diploma Request Form (10th Graders)” on the home page!
- Please contact Mr. Percy with any questions about IB! My office is 213A, stop in any time.

IB Certificate

One or more SL or HL Courses

Earn a passing grade in each course

Complete all internal assessments for each course

May exams

Participation in the May 2021 or 2022 examination session

IB WHS Medallion

2 HL and/or 2 SL Courses

Earn a passing grade in each course

Complete all internal assessments for each course

TOK (Theory of Knowledge)

Earn a passing grade in the course

Complete the TOK Essay

Complete the TOK Presentation

CAS (Creative, Activity & Service)

Enter Goals online

Enter completed hours online with supervisors name, email, and phone number

Enter a reflection for each activity

May exams

Participation in the May examination sessions



IB Diploma

3 HL and 3 SL Courses (Max 4 HL)

Earn a passing grade in each course

Complete all internal assessments for each course

EE (Extended Essay)

Choose a Teacher Advisor in January of your Junior year
Read the Guide
Research!
Draft due: August your senior year
Final due: January your Senior year

TOK (Theory of Knowledge)

Earn a passing grade in the course
Complete the TOK Essay
Complete the TOK Presentation

CAS (Creative, Activity & Service)

Enter Goals online
Enter completed experiences online with supervisors name, email, and phone number
Enter a reflection for each activity

May exams

Participation in the May 2021 and 2022 examination sessions
Email the IB office to request scores to be sent to the college of your choice



IB Courses at Washburn

Group 1 (Language and Literature)

- Language and Literature HL
- Literature and Performance SL

Group 2 (Language Acquisition)

- Spanish SL and HL
- French SL and HL
- Arabic SL

Group 3 (Individuals and Societies)

- History SL and HL
- Global Politics SL

Group 4 (Experimental Sciences)

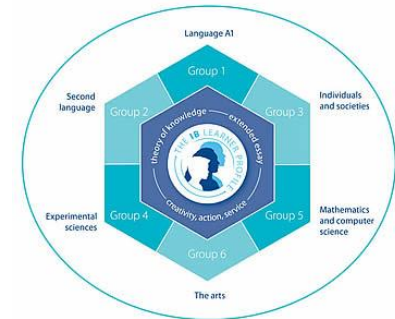
- Physics SL* or HL
- Chemistry SL
- Biology SL or HL
- Environmental Systems & Societies (ESS) SL

Group 5 (Mathematics)

- Math Analysis and Approaches SL/HL
- Math Applications and Interpretations SL/HL

Group 6 (The Arts)

- Visual Arts SL or HL
- Music SL*



Sample IB Diploma Candidate Student Schedule

Junior Year	Senior Year
IB SL Spanish V	IB HL Spanish VI
IB HL Language & Literature, y 1	IB HL Language & Literature, y 2
IB History	IB HL History, y 2
IB SL Math, y 1	IB SL Math, y 2
IB SL Biology	IB SL ESS
Elective/ T.O.K.	T.O.K./ Elective

Articulation Examples



○ University of Minnesota

- Accepts IB Higher Level scores of 5 or above for credits (8 cr)
- Accepts AP scores of 3 or above for credit (3-4 cr)
- Accepts PSEO credits

○ MNSCU schools (i.e. St. Cloud, Mankato, Winona)

- Accept IB Higher Level scores of 4 or above for 3 credits. Accept IB Standard Level scores of 4 or above for 2 credits.
- Accept AP scores of 3 or above for credit (3 cr)
- Accept PSEO credits