



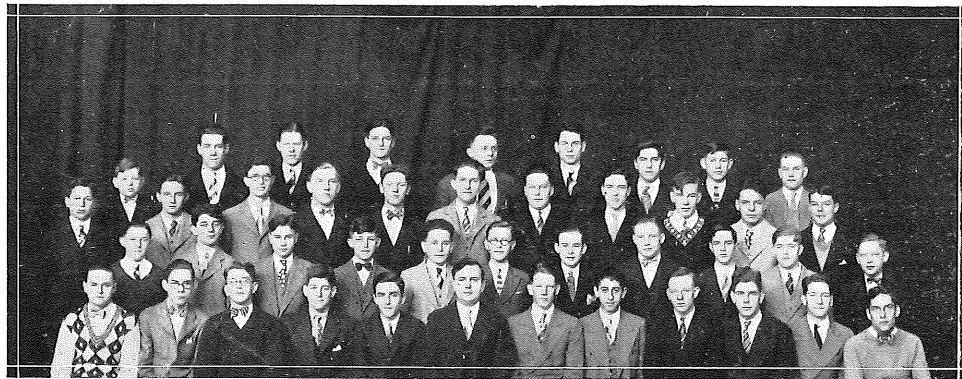
GIRLS' GLEE CLUB

First row—Wadell, Gustafson, Adams, Bones, Affeld, Mr. Emil Beckstrom (Conductor),
MacDonald, Groves, Hennig, Wright, L. Lund
Second row—Bidwell, Kriechbaum, Tinker, Merigold, Cadwallader, Johnson, Segal, Hibbard,
Hokenson, Utton, Bechtol
Third row—Crowell, McKenna, Peterson, Taylor, Roberts, McGowan, Rector, Bachman, Duff, Juster
Fourth row—Pierce, Lundquist, Sholl, Irwin, Pettit, Haverstock, Telfer, Gran, Hinz
Fifth row—Hamlin, McCracken, Hamlin, Beebe, Cedergren, Herninan, Maxson, Fleckenstein, Hays

GLEE CLUB

Jane Affeld	Officers	Carol Fager
Manus Palmer	President	Carter McDonald
Helen MacDonald	Vice-President	Helen MacDonald
	Secretary-Treasurer	
	Conductor Mr. Emil Beckstrom	

The Boys' Glee Club took second place in the city contest of 1927, and the mixed Glee Club took third place. The Glee Club has formed the nucleus for a large chorus of 350 picked voices. The chorus has presented "The Messiah," "The Holy City," and "Elijah."



BOYS' GLEE CLUB

First row—Filmore, Campbell, Blackmar, Bockman, Sprecher, Mr. Emil Beckstrom (Conductor),
M. Palmer, Santrizos, Lind, Reynolds, L. Palmer, Fager
Second row—Mason, Bockman, Percival, Kixmoeller, Sinykin, Thompson, Newgord, Smith, Squyer,
Atkinson, Chaney
Third row—Brown, Bryant, Downham, Lohse, Stein, Kulp, Ylvisaker, McDonald, R. Carlson,
Clark, McLaren
Fourth row—Wittke, Holt, E. Carlson, Lockhart, Mr. Einar Berston (Assistant Director),
Stearns, Schrader, Crandall, Stafford

