



Bottom Row (Left to Right)-Hudson, Reinhard, Forest, Read, Downham, Baker, Streeter, Dickey, Mattison, Campbell, Morris, Utton.
 Top Row- Tommerassen, Stevens, Sanford, Fullancke, Wood, Wallfred, Gibbs, Kuchris, Ogden, Erik, Faegre, Larson, Ross, Minty.

FOOTBALL TEAM

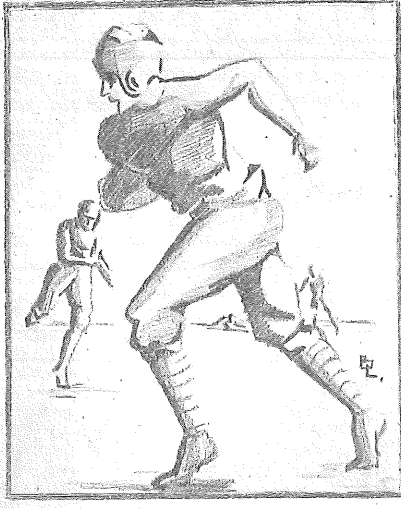
During the first week of September 1928, the football squad began its second high school conference season. From the previous year's team, eleven lettermen and a squad of promising material reported to Coaches Minty and Wells.

After three weeks of energetic practice, the first game of the season was played with John Marshall High School. This first line up was as follows: Captain Howie Gibbs, right half; Paul Wallfred, left half; Richard Carlson, quarter; John Faegre, fullback; Olet Hudson, right end; Bud Reinhard, right tackle; Bob Dickey, right guard; Bob Streeter, center; Herb Read, left guard; Jim Campbell, left tackle, and Jack Morris, left end.

The team got away to a bad start, and although Washburn fought gamely, the players were unable to cope with the smoothly executed Marshall defense. The following games with Central, South, and Edison were very close games. The team could not break the scoreless jinx in the Roosevelt game. However, the entire second quarter was played within the Roosevelt twenty-five yard line, with the ball but a few inches from the Roosevelt goal when the half ended. Playing the powerful North team, the Miller Athletics made as many first downs as the Edlie and White.

The score, ending in the Polar's favor, is not indicative of the character of the game. After outplaying West for almost an entire game, the Miller's tying point after the touchdown was missed by inches, losing the contest by one point.

Throughout the city, the team as well as its school support, second to none, is known for its unflinching fair play and sportsmanship.



Marshall	14 - 0	Washburn
Central	26 - 0	Washburn
South	13 - 0	Washburn
Edison	14 - 0	Washburn
Roosevelt	12 - 0	Washburn
North	31 - 7	Washburn
West	7 - 6	Washburn